



Accessory List

RIEGL VZ-600i



www.riegl.com

Overview

*Click on the accessory and go directly to the specifications!

Tripods

<i>Lightweight Carbon Tripod for VZ-iSeries</i>	●
<i>VZ-600i 3-Point Setup Stand with Adapter for Lightweight Carbon Tripod</i>	●
<i>Mounting Adapter for Lightweight Carbon Tripod for VZ-i Series</i>	●
<i>Carbon Surveyor's Tripod</i>	●
<i>Stable, Professional Tripod</i>	●
<i>Tripod Star for Operation on Smooth Surfaces</i>	●

GNSS Options

<i>VZ-600i RIEGL GNSS RTK Receiver</i>	●
--	---

Power Supply Management

<i>Charging Station for RIEGL RBLI 8 S1P</i>	●
<i>Dual Charger for RIEGL RBLI 8S1P</i>	●
<i>Battery-Pack Li-Ion RBLI 8S1P</i>	●
<i>AC Power Supply Unit for VZ-xx</i>	×
<i>Rechargeable NiMH Battery for External Power Supply</i>	●
<i>Automatic Charger for External NiMH Battery</i>	●
<i>Power Supply Cable, 7 pole to 2 pole for V-Line, 2m</i>	●
<i>Adapter Cable, from banana plugs to power supply cable, 1m</i>	●
<i>Adapter Cable, from cigarette lighter plug to power supply cable, 1m</i>	●
<i>Adapter Cable, 1m, from 7 pole supply cable to 12 V PbGel battery "quick action"</i>	●
<i>Adapter Cable, 1m, from 7 pole supply cable to 12 V PbGel battery "crocodile"</i>	●
<i>Power Supply Cable VZ-i Series to LiPo Battery, 0.32m</i>	●
<i>Power Supply Cable 2pole to cigarette lighter plug for V-Line, 2m</i>	●
<i>Power Supply Cable 2pole to cigarette lighter plug for V-Line, 2m – angled connector</i>	●

Camera Accessories

<i>VZ-600i mount for Sony Alpha 7R IV with RIEGL GNSS RTK Receiver, Ri-RTKCM</i>	●
--	---

Camera

<i>Sony Alpha 7R IV Camera for use with RIEGL VZ-600i</i>	●
---	---

Accessories for Protection and Transport

<i>Scanner Carrying Case for VZ-600i</i>	●
<i>Set of Protection Caps for VZ-600i</i>	×

Retroreflectors

<i>Flat Circular Retroreflectors</i>	×
<i>Biaxial Bireflex Flat Circular Retroreflectors</i>	●
<i>Cylindrical Retroreflectors</i>	●

Equipment for Permanent Monitoring

<i>RIEGL V-Line CB23</i>	●
--------------------------	---

Other Accessories

<i>TCP/IP Cable M12-RJ45, 1.3m</i>	×
<i>TCP/IP Cable M12-RJ45, 3m</i>	●
<i>USB Debug Cable for VZ-600i, 1.5m</i>	×
<i>CFexpress Typ B Card Reader for VZ-600i, with USB 3.2 Connection Cable</i>	×

× ... Accessories are part of the basic configuration

● ... Optional Accessories

*Click on the accessory and go directly to the specifications!

Service Options

<i>Basic Service Package A for VZ-600i</i>	●
<i>Digital Camera Calibration Service for V-Line Scanner</i>	●

Post-Processing Software

<i>RiSCAN PRO Static LiDAR Data Processing (SNL/SIL)</i>	✕/●
<i>Extended Maintenance for RiSCAN PRO Static LiDAR Data Processing</i>	●
<i>RiSOLVE Static LiDAR Data Processing for Rapid Response</i>	●
<i>Extended Maintenance for RiSOLVE Static LiDAR Data Processing for Rapid Response</i>	●
<i>RiMINING Static LiDAR Data Processing for Mining</i>	●
<i>Extended Maintenance for RiMINING Static LiDAR Data Processing for Mining</i>	●

Post-Processing Software | Plug-Ins

<i>RiPANO Publishing</i>	●
<i>LIS GeoTec Plug-In</i>	●
<i>RiSCAN PRO Kinematic Data Processing</i>	●
<i>RiUNITE – RiWORLD functionality, LIGHT</i>	●
<i>Static Multi Station Adjustment License</i>	●

Firmware Apps

<i>Mining Apps for VZ-i Series (Monitoring, DesignCompare, SlopeAngle)</i>	●
--	---

✕ ... Accessories are part of the basic configuration

● ... Optional Accessories

Tripods


Lightweight Carbon Tripod for VZ-iSeries

 Part-No. HW-GP-06-570-00

- Benro C3780TN (max. height: 150 cm)



VZ-600i 3-Point Setup Stand with Adapter for Lightweight Carbon Tripod

 Part-No. HW-VZI-06-009-00




Mounting Adapter for Lightweight Carbon Tripod for VZ-i Series

 Part-No. HW-GP-06-536-00



Carbon Surveyor's Tripod

 Part-No. HW-GP-06-474-00



Intended for combined use!

Stable, Professional Tripod



Part-No. HW-GP-06-370-00

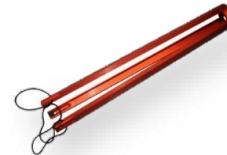
VZ-2000i



Tripod Star for Operation on Smooth Surfaces



Part-No. HW-GP-06-001-00



GNSS Options

VZ-600i GNSS RTK Receiver



Part-No. HW-VZI-06-008-00



Power Supply Management

Charging Station for *RIEGL* RBLI 8S1P


 Part-No. HW-VZXX-04-011-00

Provides the possibility to charge up to 6 *RIEGL* RBLI 8S1P at the same time

- Input Supply Voltage 11-34V
- Charging time
 - up to 3 batteries 2,75h
 - 4 batteries 4,5h
 - 6 batteries 5,5h
- Size 350x295x150 (mm)



Dual Charger for *RIEGL* RBLI 8S1P


 Part-No. HW-VZXX-04-010-00

Provides the possibility charge up to 2 (two) *RIEGL* RBLI 8S1P at the same time

- Input Supply Voltage 11-34V
- Charging time 2,75h
- Size 94x42x170 (mm)




Battery-Pack Li-Ion RBLI 8S1P

 Part-No. HW-VZXX-04-009-00

- Li-Ion 28.8 V Technology
- Capacity 99 Wh, 3.45 Ah
- Battery pack life typ. 500 - 600 charging cycles



AC Power Supply Unit for VZ-xx

 Part-No. HW-VZXX-04-000-00

For *RIEGL* VZ-xx, 100 - 240 V AC, 50 - 60 Hz

- for direct operation of the scanner from main power supply and simultaneously charging of a mounted add-on rechargeable battery or
- for direct charging of an unmounted add-on rechargeable battery



Intended for combined use!

Rechargeable NiMH Battery for External Power Supply



Part-No. HW-GP-04-000-00

- 13.2 V, 18 Ah, 238Wh, with fuse, weight 3.55 kg



Automatic Charger for External NiMH Battery



Part-No. HW-GP-04-001-00

- 100 -240 V AC, short circuit proof, weight 0.4kg



Power Supply Cable, 7 pole to 2 pole for V-Line, 2m



Part-No. HW-VXX-03-011-01



Adapter Cable, from banana plugs to power supply cable, 1m



Part-No. HW-GP-03-004-00



Adapter Cable, from cigarette lighter plug to power supply cable, 1m



Part-No. HW-GP-03-005-00

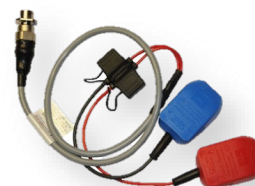


Adapter Cable, 1m, from 7 pole supply cable to 12 V PbGel battery ("quick action")



Part-No. HW-GP-03-006-00

- with "quick action" battery pole connectors



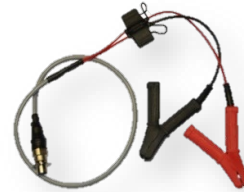
Intended for combined use!

Intended for combined use!

Adapter Cable, 1m, from 7 pole supply cable to 12 V PbGel battery (“crocodile”)

➤ *Part-No. HW-GP-03-007-00*

- with “crocodile” battery pole connector



Power supply cable VZ-i Series to LiPoBattery, 0.32m

➤ *Part-No. HW-VXX-03-044-00*



Power Supply Cable 2 pole to cigarette lighter plug for V-Line, 2m

➤ *Part-No. HW-VXX-03-052-00*



Power Supply Cable 2 pole to cigarette lighter plug for V-Line, 2m – angled connector

➤ *Part-No. HW-VXX-03-054-00*



Camera Accessories

VZ-600i *RIEGL* GNSS RTK Receiver with mount for Sony Alpha 7RIV, Ri-RTKCM

 Part-No. HW-VZI-06-007-00

- detachable
- for high precision mounting of the camera
- with connector for GPS antenna
- power supplied via scanner
- direct USB connection
- without camera



Camera

Sony Alpha 7R IV Camera for use with *RIEGL* VZ-600i

 Part- HW-CAM-09-020-00


- Objective lens included

[Click or scan for the specifications!](#)



Accessories for Protection and Transport

Scanner Carrying Case for VZ-600i


 Part-No. HW-VZXX-05-016-00

With 4 hinged handgrips and wheels, splash-proof, foam lined to fit shape of *RIEGL* VZ-600i scanner series and cables.



* Image may differ slightly from the original

Set of Protection Caps for VZ-600i

 Part-No. HW-VZXX-06-098-00

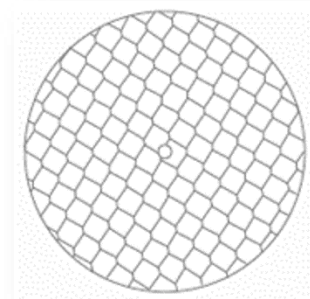


Retroreflectors

Flat Circular Retroreflectors

- *Part-No. HW-GP-06-002-00 /*
Part-No. HW-GP-06-003-00 – 100 pcs

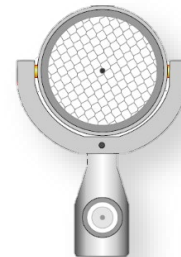
- 50 / 100 mm each
- self-adhesive



Biaxial Bireflex Flat Circular Retroreflectors

- *Part-No. HW-GP-06-011-00 – 15 pcs.*

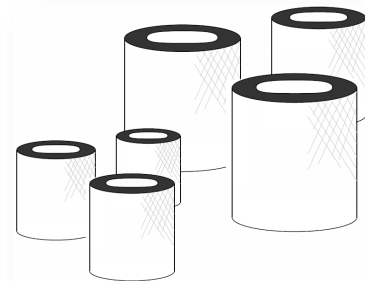
- 50 mm each
- mounted on universal joints



Cylindrical Retroreflectors

- *Part-No. HW-GP-06-006-00 /*
Part-No. HW-GP-06-008-00 – 15 pcs.

- 50 mm x 50 mm
100 mm x 100 mm



Equipment for Permanent Monitoring

RIEGL V-Line CB23

- *Part-No. HW-VZXX-06-097-00*

RIEGL V-Line CB23 for stable and seamless remote 24/7 operation of *RIEGL* V-Line scanners.



Other Accessories

TCP/IP Cable M12-RJ45, 1.3m

 *Part-No. HW-GP-03-141-00*



TCP/IP Cable M12-RJ45, 3m

 *Part-No. HW-GP-03-056-00*



USB Debug Cable for VZ-600i, 1.5m

 *Part-No. HW-VZ-03-000-00*



CFexpress Typ B Card Reader for VZ-600i, with
USB 3.2 Connection Cable

 *Part-No. HW-VZI-06-010-00*



Service Options

Basic Service Package A for VZ-600i

 *Part-No. HW-VZ600-11-000-00*

Package A is recommended at a basic service interval of either

- 3000 hours of total scan operating time (= scanning mechanism in operation)
- or 2 years

whichever occurs earlier.

It comprises:

- | | |
|--|--|
| • handling and cleaning of the device | • re-calibration of the orientation sensors at the <i>RIEGL</i> test field measurement of laser output power |
| • laying out of service paper work | • check of measurement range |
| • first functional check | • test of GNSS interface |
| • cleaning of the beam exit window | • preparation of calibration and test certificates |
| • Installation of firmware upgrades (if applicable) | • packing of the device and return shipment |
| • re-calibration of the range finder unit | • check the calibration of the internal camera |
| • re-calibration of the scanner at the <i>RIEGL</i> test field | |

Digital Camera Calibration Service for V-Line Scanner

 *Part-No. ST-GP-11-002-00*

Provides complete set of camera calibration parameters for use in RiSCAN PRO including internal calibration, lens distortion parameters and mounting calibration parameters. Parameters are delivered within a RiSCAN PRO project. Calibration statistics included (available for camera-lens combinations as recommended by *RIEGL* LMS).

Post-Processing Software

RiSCAN PRO Static LiDAR Data Processing

 **Instrument Serial Number License**
Part-No. SW-TLS-07-000-00


 **Floating License Package**
Part-No. SW-TLS-07-001-00

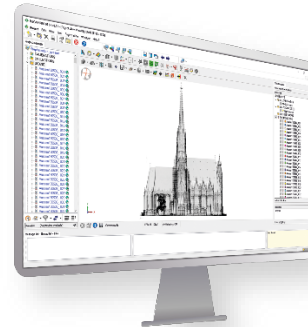
[Click or scan for the specifications!](#)



Extended Maintenance for RiSCAN PRO Static LiDAR Data Processing

 **Instrument Serial Number License**
Part-No. SW-TLS-12-000-00

 **Floating License Package**
Part-No. SW-TLS-12-001-00



RiSOLVE Static LiDAR Data Processing for Rapid Response

 **Instrument Serial Number License**
Part-No. SW-TLS-07-004-00

 **Floating License Package**
Part-No. SW-TLS-07-005-00

[Click or scan for the specifications!](#)




Extended Maintenance for RiSOLVE Static LiDAR Data Processing for Rapid Response

 **Instrument Serial Number License**
Part-No. SW-TLS-12-004-00

 **Floating License Package**
Part-No. SW-TLS-12-005-00



RiMINING Static LiDAR Data Processing for Mining

 **Instrument Serial Number License**
Part-No. SW-TLS-07-002-00

 **Floating License Package**
Part-No. SW-TLS-07-003-00



[Click or scan for the specifications!](#)

Extended Maintenance for RiMINING Static LiDAR Data Processing for Mining

 **Instrument Serial Number License**
Part-No. SW-TLS-12-002-00

 **Floating License Package**
Part-No. SW-TLS-12-003-00



Post-Processing Software | Plug-Ins

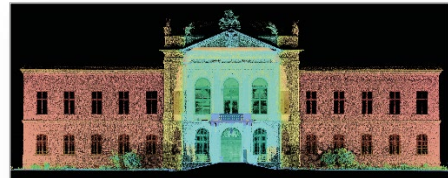
RiPANO Publishing

 **Instrument Serial Number License**
Part-No. SW-TLS-07-006-00

 **Floating License Package**
Part-No. SW-TLS-07-007-00



[Click or scan for the specifications!](#)



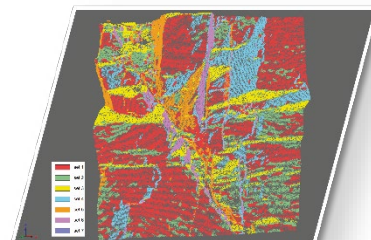
LIS GeoTec Plug-In

 **Instrument Serial Number License**
Part-No. SW-TLS-07-008-00


 **Floating License Package**
Part-No. SW-TLS-07-009-00



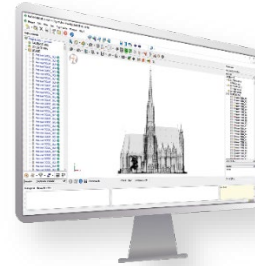
[Click or scan for the specifications!](#)



RiSCAN PRO Kinematic Data Processing

 **Instrument Serial Number License**
Part-No. SW-TLS-07-012-00

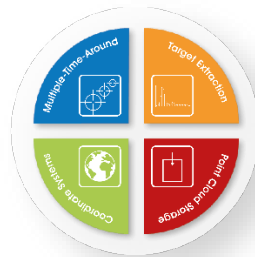
 **Floating License Package**
Part-No. SW-TLS-07-013-00



RiUNITE - RiWORLD functionality, LIGHT

 **Instrument Serial Number License**
Part-No. SW-GP-02-158-00

 **Floating License Package**
Part-No. SW-GP-02-157-00



Static Multi Station Adjustment License

 **Instrument Serial Number License**
Part-No. SW-TLS-07-010-00

 **Floating License Package**
Part-No. SW-TLS-07-011-00



Intended for combined use!

Firmware Apps

Mining Apps for VZ-i Series (Monitoring, DesignCompare, SlopeAngle)

 Part-No. SW-GP-02-102-00

Three easy-to-use and innovative apps, which support users in their daily work, especially in critical situations. Visualization of the results via GUI or web viewer for detailed analysis.

- Monitoring App: Data comparison and visualization of differences to a reference data set
- Design Compare App: Data comparison to a given 3D design model. Visualization of undercut and overcut.
- Slope Angle App: Calculation and visualization of local slope angles

[Click or scan for the specifications!](#)

